



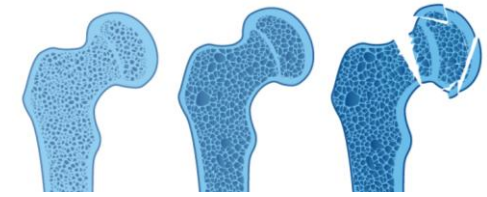
BROKEN BONES, BROKEN LIVES:

The fragility fracture crisis in Italy

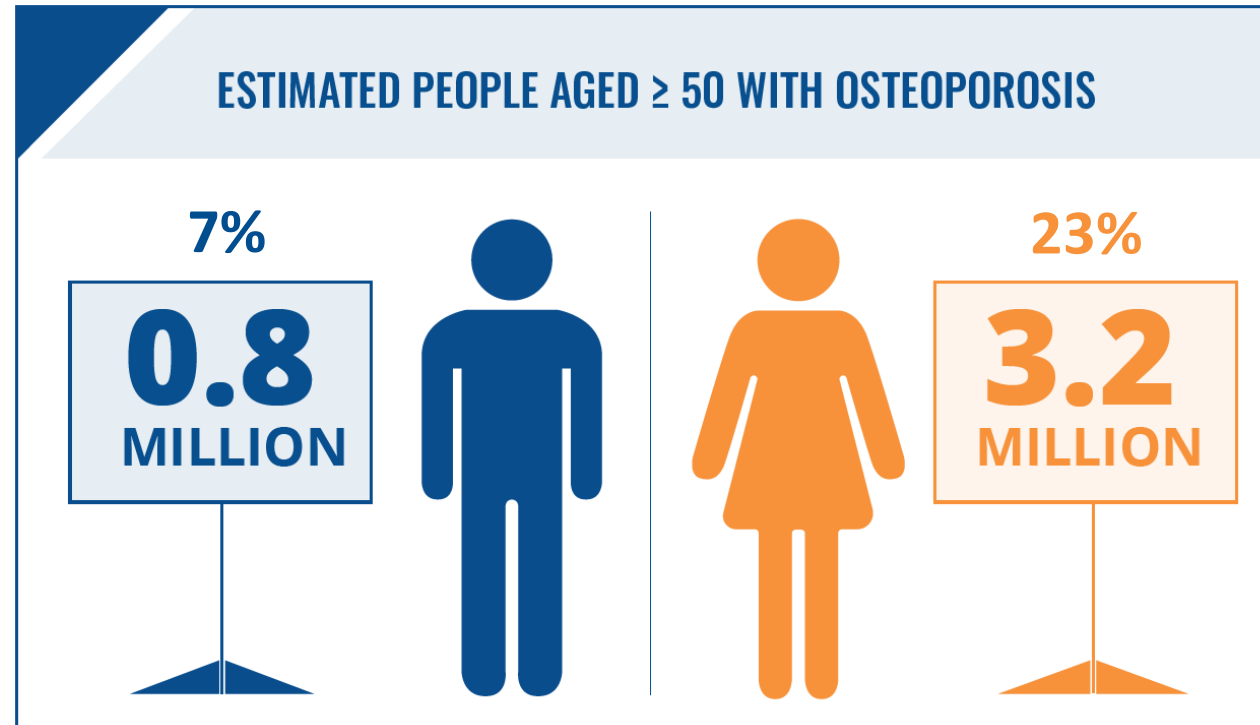


The development of this initiative has been supported by UCB.

OSTEOPOROSIS



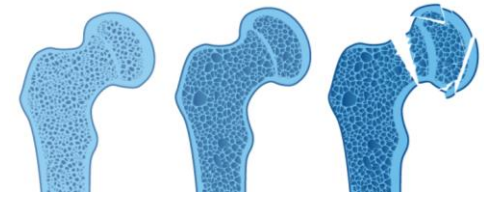
- Prevalence:**
- approximately 4 million people have osteoporosis in Italy (2015)
 - comparable to the other EU6* nations



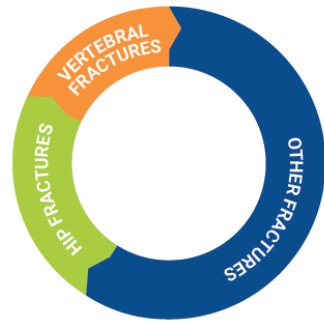
OSTEOPOROSIS



FRAGILE BONES THAT **FRACTURE EASILY**



TOTAL NUMBER OF FRAGILITY FRACTURES PER YEAR



563.388

of which 51% were MOFs*



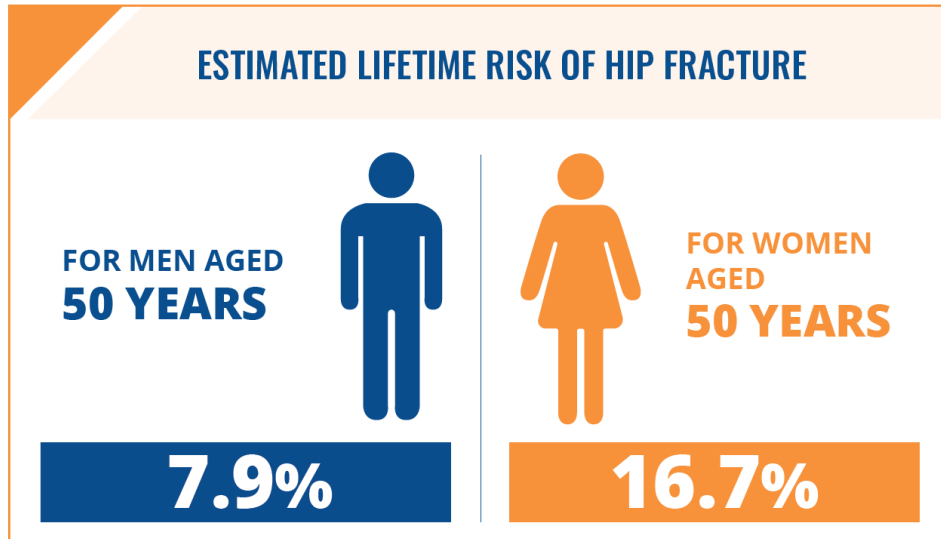
* Major Osteoporotic Fractures

Fragility fractures due to osteoporosis affect both men and women

Incidence in Italy:
Estimated number of fragility fractures in 2017, and by fracture category



FRAGILITY FRACTURES IN THE CONTEXT OF PUBLIC HEALTH PRIORITIES

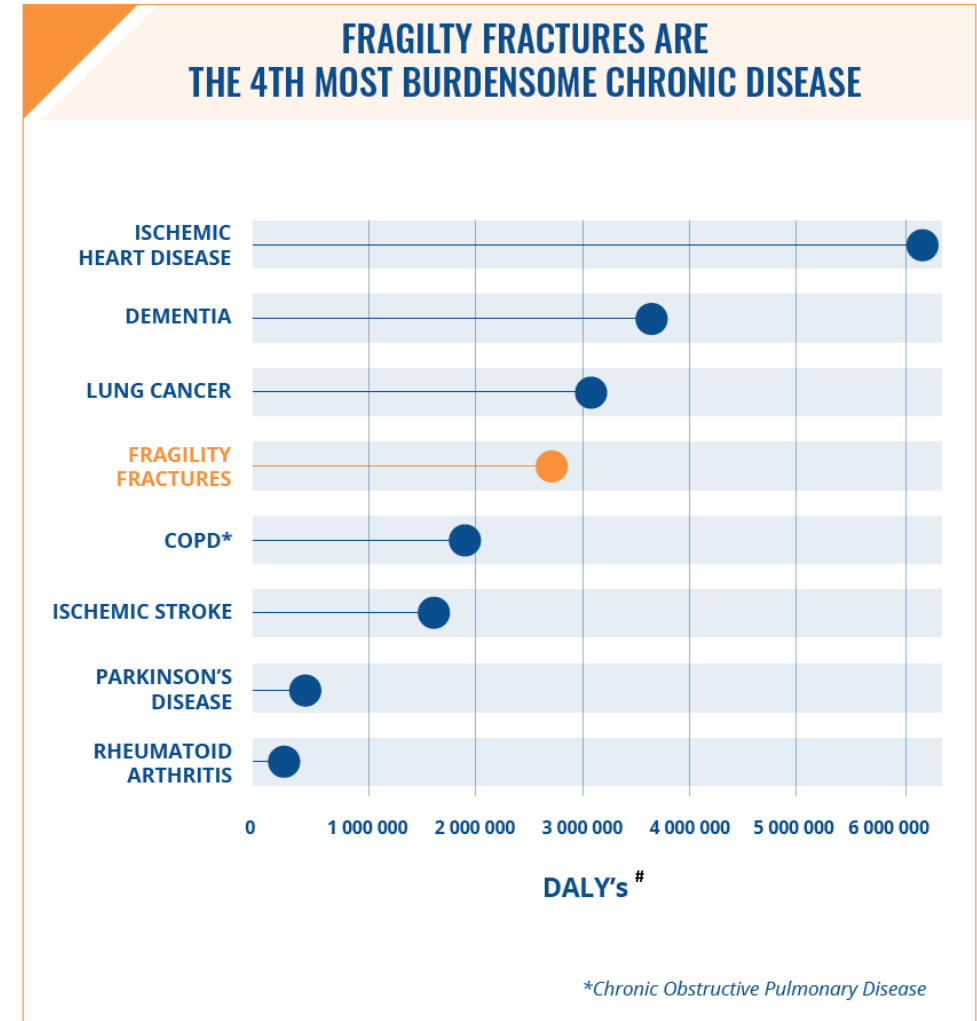
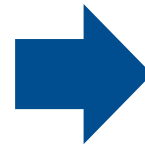


MOF = 16%⁺
STROKE = 14%⁺

MOF = 34%⁺
STROKE = 20%⁺

Lifetime risk of sustaining a MOF is higher than the lifetime risk of a having a stroke for both women and men⁺

⁺ MOF (Major Osteoporotic Fracture) risk for individuals aged 50 in Italy; equivalent stroke risk in Europe



Disability-adjusted life years: a measure of the impact of a disease or injury in terms of healthy years lost




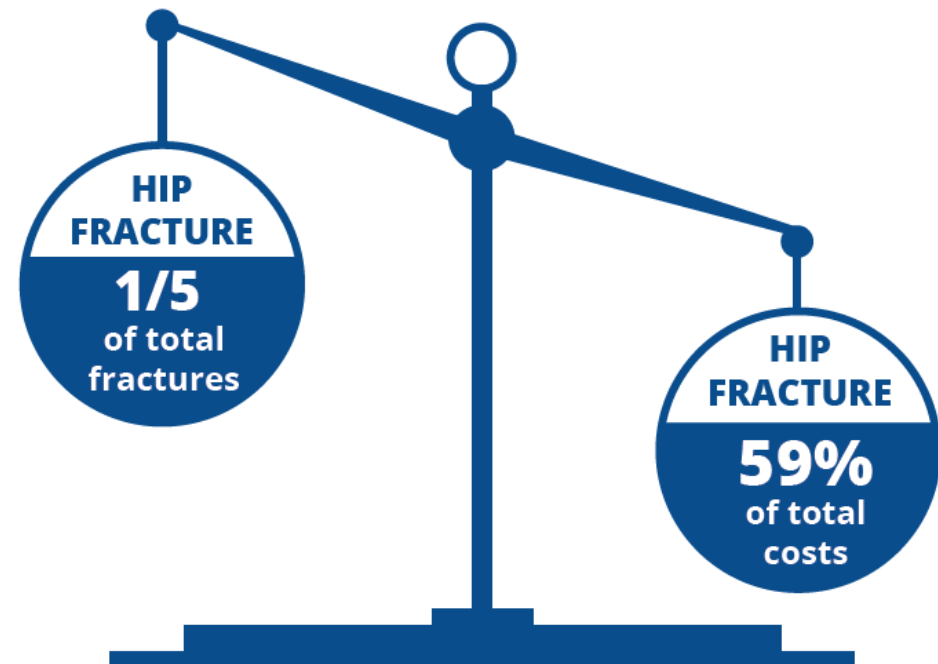
FRAGILITY FRACTURES INCUR SUBSTANTIAL HEALTHCARE COSTS

Fracture-related costs:

1st
YEAR

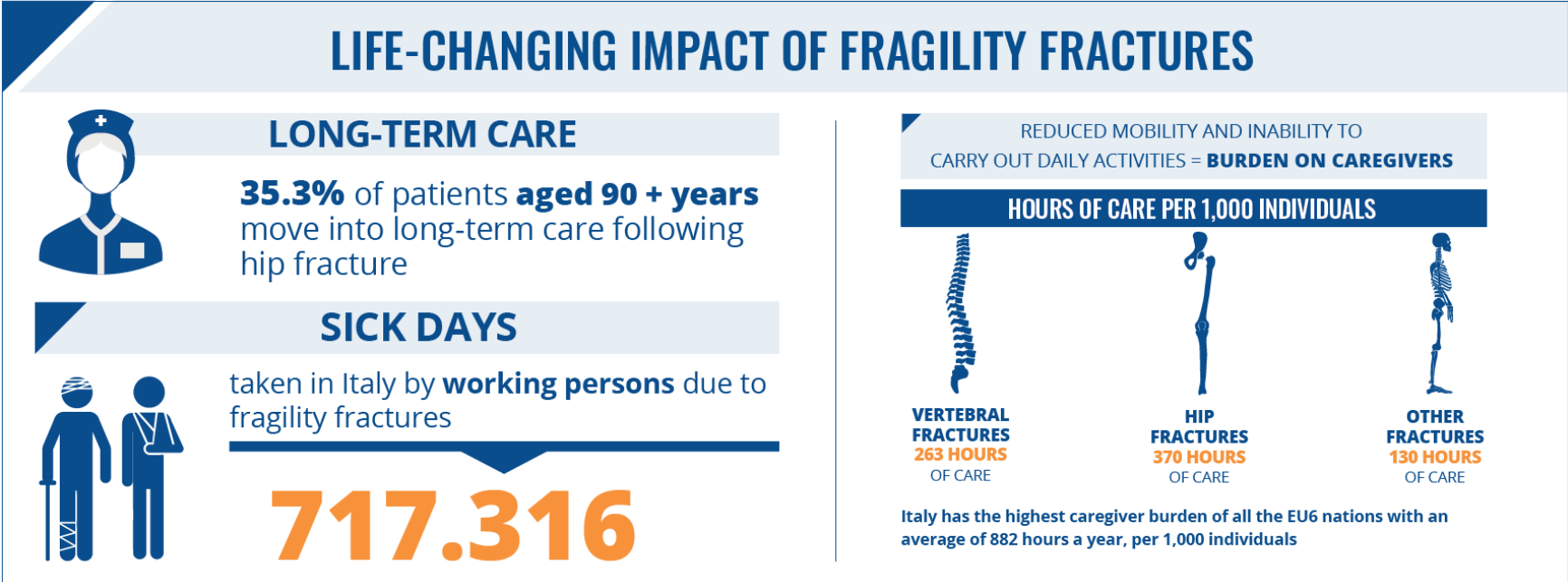
Happen **during first year** after fracture

 Highest with **hip fractures**



FRAGILITY FRACTURES HAVE A MULTIFACETED IMPACT ON THE INDIVIDUAL AND SOCIETY

Reduced independence and lifestyle impairment



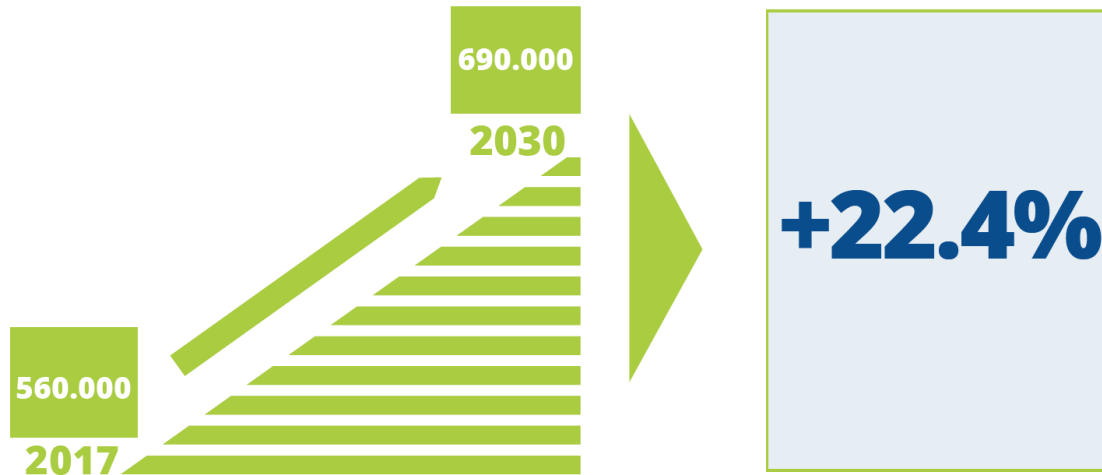
Patients suffering fragility fractures depend on care from family and friends

Fragility fractures can significantly impact the working population: Italy is close to the EU6 average number of sick days taken per 1000 people

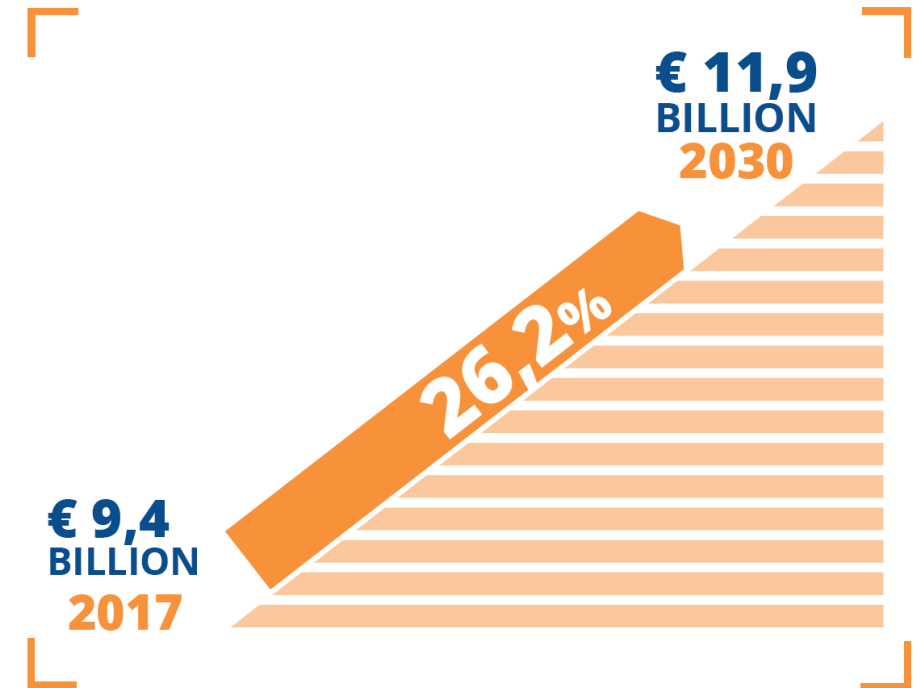


FRAGILITY FRACTURES ARE A GROWING CHALLENGE IN THE PUBLIC HEALTH LANDSCAPE

The incidence of fragility fractures is set to rise



Fracture-related costs are set to rise



EFFECTIVE MANAGEMENT IMPROVES OUTCOMES AND REDUCES COSTS

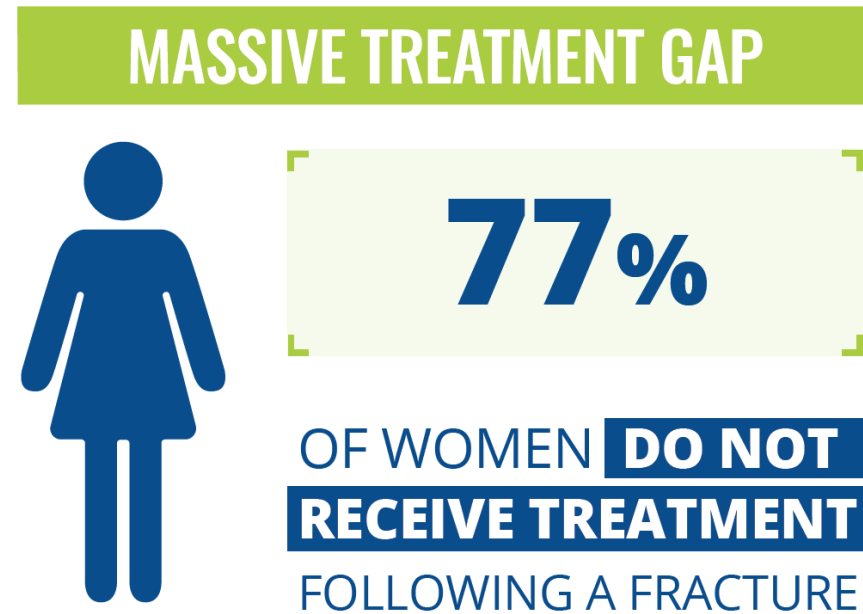
One fragility fracture leads to another:

Women who have had a fragility fracture are

five times more likely to experience a second fracture

within the first year after a fracture than women who have not had a prior fracture,

yet...



With appropriate medical treatment, many fragility fractures can be avoided



EFFECTIVE MANAGEMENT IMPROVES OUTCOMES AND REDUCES COSTS

Coordinated care models are multidisciplinary

healthcare delivery models which aim **to identify, diagnose and treat patients** who have suffered a fragility fracture

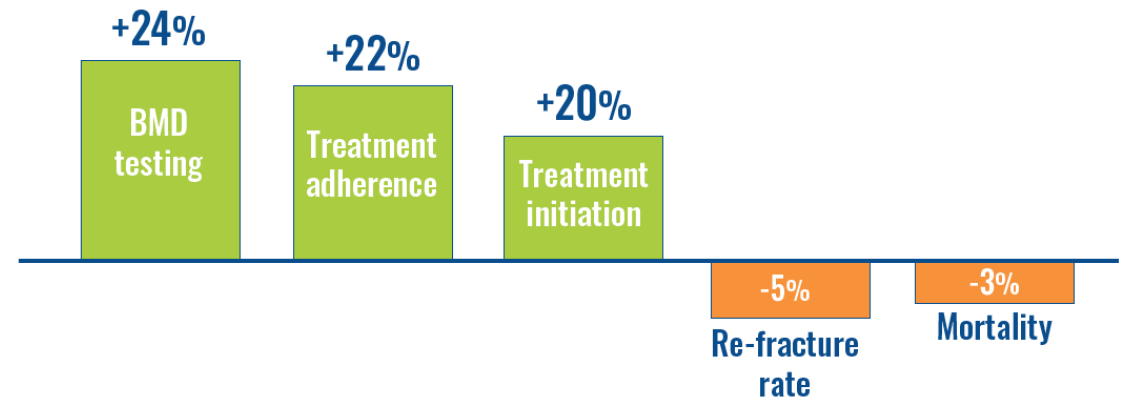
Multidisciplinary models

for secondary fracture prevention can **contribute to closing the treatment gap**

FRACTURE LIAISON SERVICES (FLS)

= cost-effective care delivery model to **IMPROVE OVERALL OUTCOMES & REDUCE COSTS**

EFFECTS of FLS (absolute change)



A ROADMAP TO SOLVE THE FRAGILITY FRACTURE CRISIS IN ITALY

Italy faces a paradoxical situation:

On paper, there is a strong framework to encourage post-fracture care



However, many of these **recommendations remain theoretical** and are **yet to be implemented in practice**



As a consequence, **Italian patients do not receive optimal care** and **the healthcare system does not benefit from the potential cost savings**

All stakeholders have a responsibility to implement the following **policy recommendations:**

1. Prioritize sub-populations at risk of subsequent fracture
2. Encourage the development of patient pathways after a fragility fracture
3. Use quality metrics and a database to reduce costs associated with hospitalization
4. Foster patient proactivity through awareness campaigns





Broken bones, broken lives:
The fragility fracture
crisis in Italy



Società Italiana dell'Osteoporosi
del Metabolismo Minerale
e delle Malattie dello Scheletro



FOR MORE INFORMATION

www.iofbonehealth.org/broken-bones-broken-lives